

С. ЖУКОВ

## В ПОИСКАХ УТРАЧЕННОГО СОЧИНЕНИЯ

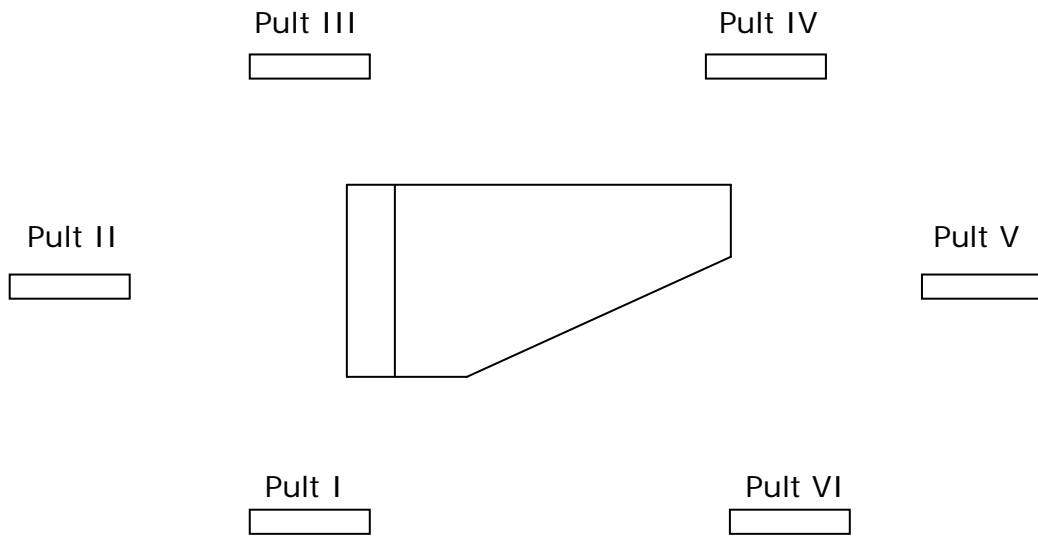
пространственная композиция  
для кларнета, клавесина/клавикорда и магнитофонной плёнки

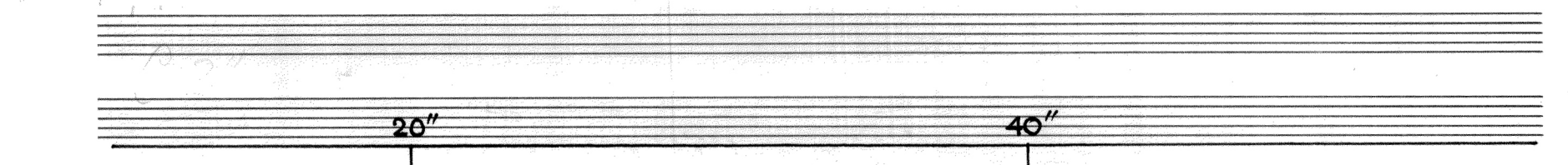
S. ZHUKOV

## IN SEARCH OF THE MISSING SCORE

spatial composition  
for clarinet, cembalo/clavichord and soundtrack

## DISPOSITION OF THE PULTS ON THE STAGE





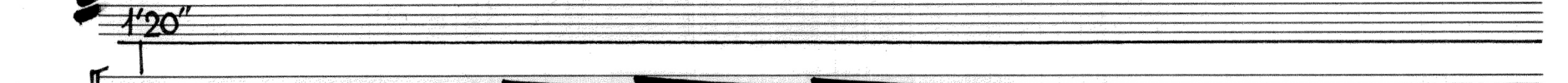
Tape

Cemb. } Slow come on the stage, put the scores on the pulsts, and begin to play from [ ]



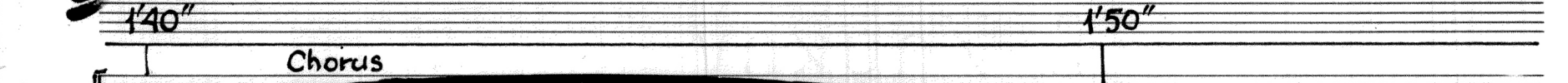
Tape

Cemb. } *p* [ ] *arp.* [ ]



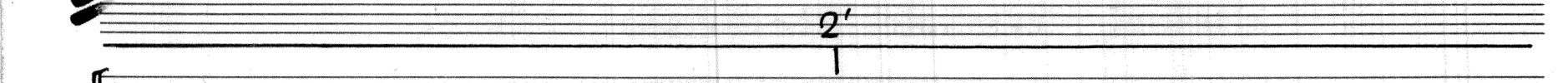
Tape

Cemb. } *arp. sempre* [ ] [ ] [ ] [ ]



Tape

Cemb. } *Chorus* [ ] *vibr* [ ] [ ] [ ]



Tape

Cemb. } *Cor* [ ] *Vibr. + p-tti* [ ] [ ] [ ]

2'10"

Tape

CL. / B/

Cemb.

*Cne*  
Vibr.

Arpac  
gliss.

3

Begin to play outside the hall and come on the stage during [3]

Tape

CL.

Cemb.

*Cne*

Vibr.

Tape

CL.

Cemb.

Arpac  
gliss.

*Cne*

Tape

CL.

Cemb.

*mf*

Arpa

Cne  $\overset{z}{p}$

Archi

Tape

CL.

Cemb.

Trba

Vibr.

Arpa

gliss.

Tape

CL.

Cemb.

4

CL.

POLT I mf

Tape

CL.

Cemb.

Tape

CL.

Tape

CL.

5

Cel.

Handwritten musical score for measures 5-6. The system includes staves for Tape, Cello (Cl.), and Celesta (Cemb.).

- Tape:** Treble clef, contains a few notes.
- Cl.:** Treble clef, contains a complex melodic line with many accidentals.
- Cemb.:** Treble clef, contains a complex accompaniment with many accidentals and a marking "arp." (arpeggiato).

6

Handwritten musical score for measures 7-8. The system includes staves for Tape, Clarinet (Cl.), and Celesta (Cemb.).

- Tape:** Treble clef, contains a few notes.
- Cl.:** Treble clef, contains a melodic line with slurs and accents, marked with "tu".
- Cemb.:** Treble clef, contains a few notes.

Handwritten musical score for measures 9-10. The system includes staves for Tape and Clarinet (Cl.).

- Tape:** Treble clef, contains a few notes.
- Cl.:** Treble clef, contains a melodic line with slurs and accents, marked with "sim." (sostenuto) and "tu".

7

Handwritten musical score for measures 11-12. The system includes staves for Tape, Arches (Archi), and Clarinet (Cl.).

- Tape:** Treble clef, contains a few notes.
- Archi:** Treble clef, contains a few notes, marked with "pp" (pianissimo).
- Cl.:** Treble clef, contains a melodic line with slurs and accents, marked with "tuo poco ord." (tuo poco ordinario) and "Dolce".

Handwritten musical score for measures 13-14. The system includes staves for Tape and Clarinet (Cl.).

- Tape:** Treble clef, contains a few notes.
- Cl.:** Treble clef, contains a melodic line with slurs and accents.

Handwritten musical score for measures 15-16. The system includes staves for Tape and Clarinet (Cl.).

- Tape:** Treble clef, contains a few notes.
- Cl.:** Treble clef, contains a melodic line with slurs and accents.

8

Tape

8 sempre

CL.

Pult II

♩ = 88-92

Cemb.

9

Tape

CL.

*mf*

Cemb.

10

Tape

CL.

Cemb.

Tape

CL.

Cemb.

Tape

CL. *4-6*

Cemb.

Tape

CL.

Cemb.

Tape

Archi

CL.

Cemb.

12

Tape

CL.

Cemb.

Irba

4-6



13

Tape

Corn

Tromboni

CL.

Cemb.

Tape

Tuba

CL.

Cemb.

14

Tape

CL. *b<sup>♭</sup>*

*mf*

Lute

*mf*

Cemb.

Tape

CL.

Cemb.

Vni

Tape

Cl.

Cemb.

Tape

Cl.

Cemb.

Tape

Cl.

Cemb.

Celesta

mf

Tape

Cl.

Cemb.

Tape

CL. *Dolce*

Tape

CL.

Tape

CL. Transposition to Pult III

13 TF

16 Cadenza aleatoria

Tape

CL.

Cemb.

Tape

CL. *sf subp* *frull*

Cemb.

Tape

CL.

Cemb.

Tape

CL.

Cemb.

slap >    slap

Tape

CL.

Cemb.

Tape

CL.

Cemb.

slap >    slap

Tape

Tuba    Tromboni    Corni

*p*    *p*    *p*

CL.

Cemb.

cadenza ad Libitum

cadenza ad Libitum

Tape

CL.

Tape

CL.

CLi

Cel.

Tape

CL.

Cemb.

arp.

FL.

Archi

Tape

CL.

Cemb.

CLi

Cel.

Tape

CL.

Cemb.

Tape

CL.

Cemb.

21

Tape

CL.

Cemb.

CL. basso

Tape

CL.

Cemb.

*poco trb frul e ord. (sim)*

Transposition to Pult IV

Tape

CL. *PULT IV*  
*mf*

Cemb.

Tape

CL.

Cemb.

Tape

CL.

Cemb.

Tape

CL.

Cemb.

24

Tape

CL.

Cemb.

*poco a poco*

25

Tape

CL.

Cemb.

*crescendo*

26

Tape

CL.

Cemb.

27

Tape

CL.

Cemb.



Tape

CL.

Cemb.

Tape

CL.

Cemb.

Tape

CL.

Cemb.

Tape

CL.

Cemb.

Tape

gliss ad Libit.

CL.

Cemb.

Tape

CL.

Cemb.

*sim. poco rubato*

3 3 3 3 4 4 4

Tape

CL.

Cemb.

6-8

Tape

CL.

Cemb.

4

*pp*

34 Dolce

CL. *p*

CL.

CL. *mp*

35

Tape

CL. *mp*

Cemb.

*pp* Archic

Transposition to Pult V

PULT V *pp*

Tape

CL.

Cemb.

Tape

CL.

Cemb.

Tape

CL.

Cemb.

Tape

CL.

Cemb.

Tape

CL.

Cemb.

36

Tape

CL.

Cemb.

Tape

CL. *mp* *pp* *mp* *pp*

Cemb.

Tape

CL. *mp* *pp*

Cemb.

37

Tape

CL. \* To put the CLarinet on the Cembalo and go out from the hall

Cemb.

38

Tape

CL.

Cemb. \* \* To take the score and go behind the scene

Tape

CL.

\*\*\* Sound from outside of the hall